

Barcode Scanners

Selection guide [P.1461—P.1468](#) 



+86-755-83330055

www.senpum.com/en



WeChat



WhatsApp



LINE

Standard type



1D/2D barcode scanners

XR-1000

P.1465 [▶](#)

Intelligent type



1D/2D barcode scanners

XR-1500

P.1467 [▶](#)

Standard type



> Standard type
XR-1000 series

- Smallest resolution 0.12mm
- Up to 100 codes/s

P.1465

Intelligent type

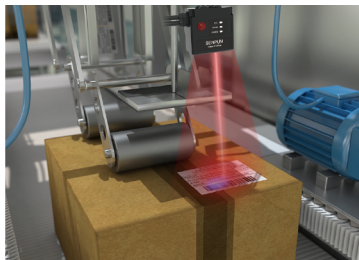


> Intelligent type
XR-1500 series

- Support auto-focus, auto parameter setting
- Support rich communication protocols

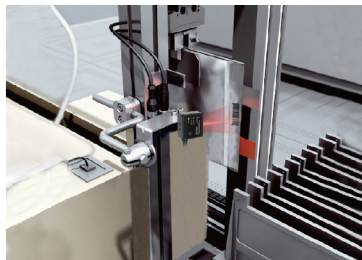
P.1467

Application Scene



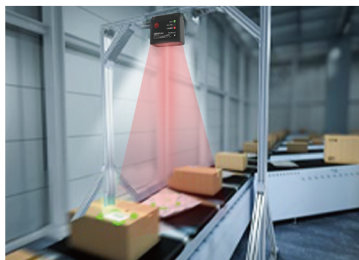
Automatic packaging Information reading

The XR-1000 reliably reads barcode information at high speeds on high-speed automatic packaging machine lines, regardless of the status of the barcode information.



Read barcode information

Stable reading of barcode information using a barcode reader.



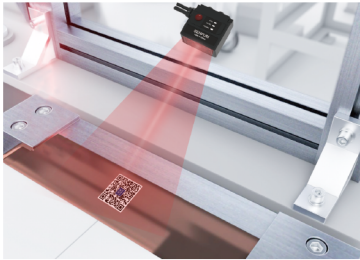
Crossbelt sorter High-speed readout

No need to stop the workpiece in order to read, the XR-1000 series barcode readers can read barcodes on rotating, moving workpieces.



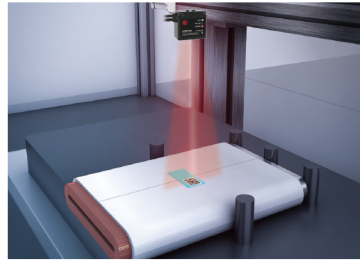
IC parts for high-speed dynamic reading

Reads multiple components on a pallet at once, with a reading speed of up to 100 codes/sec.



Reading QR code for battery component

Stable reading of QR codes on battery components using barcode readers.



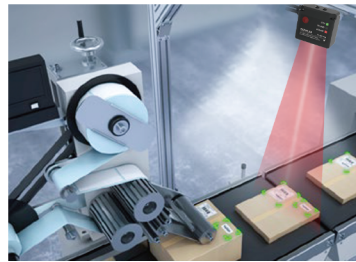
Inspection battery QR code engraving

Stabilise the detection of whether the QR code on top of the battery is fully engraved or not.



Automatic packaging machine Read through film

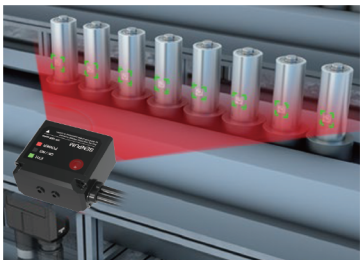
Adoption of the XR-1000, a high-precision barcode reader with 1 megapixel in its class, which can read barcode information stably through the film.



Automatic labelling machines

Label reading

Unaffected by the height of the object , tags with different heights can be read.



Read multiple battery barcodes at once

High-speed dynamic reading, recognizes information from barcodes on multiple cells at the same time, and provides uniform illumination in the field of view, so difficult-to-read codes with low-contrast imprints can also be read consistently.



Reading logistics information

1 megapixel processor with a large field of view, even if there are multiple barcodes in the distance can still be read, "installation can be" to achieve stable reading.

Fiber Optic Sensors

Photoelectric Sensors

Color Sensors

Laser Sensors

Inductive Proximity
SensorsPrecision Contact
SensorsArea/Safety Light
Curtain

Laser Scanners

Digital Contact Sensors

Laser Displacement
SensorsConfocal Displacement
Sensors

Barcode Scanners

RFID

Infrared Temperature
SensorsDigital Pressure
Sensors

Flow Test Sensors

Gate Magnetic Sensors

Ultrasonic
Displacement Sensors

Magnetic Scale

Static Eliminators